

Cal. 6319A

Characteristics

Casing diameter: ϕ 27.0 mm
 Maximum height: 5.2 mm
 Vibration per hour: 21,600
 Automatic winding with sweep second
 Calendar (day & date)
 Instant setting device for day & date calendar
 "Diashock" Shock Resistant Device

112 602

122 602

161 805

171 611

193 602

205 613

213 612

221 611

225 611

231 602

241 611

251 602

261 611

271 611

282 601

285 611

301 611

311 601

341 601

345 601

354 601

381 601

383 601

384 601

387 601

388 601

390 601

☆397 601

☆397 602

401 615

☆500 601

505 601

☆801 601

802 601

803 601

808 601

810 601

817 611

831 611

839 601

868 601

☆870 510

873 601

963 610

☆884 931

011 145

011 146

011 147

011 206

011 210

011 306

011 406

011 503

011 532

011 723

011 724

014 317

014 363

014 364

014 365

014 366

015 113

015 411

015 421

022 257

022 458

022 467

022 468

022 491

022 493

022 760

022 761

022 160

023 039

023 040

023 150

023 151

022 257

022 458

022 467

022 468

022 491

022 493

022 760

022 761

022 160

$\frac{3}{4}$

Catalog No.

Calibre No.	Jewels	Style Name	
6319A	21j		
⇒ Basic Calibre 6309A 17j Catalog No. 63-09-1			
PART NO.	PART NAME	PART NO.	PART NAME
112 602	Barrel & train wheel bridge	014 364	Diashock lower frame
122 602	Center wheel bridge	014 365	Diashock hole jewel with frame
161 805	Pallet cock	015 113	Diafix spring
171 611	Balance cock	015 411	Diafix upper hole jewel with frame for escape wheel
193 602	Framework for automatic device with ball-bearing	015 421	Diafix upper hole jewel with frame for third wheel
205 613	Complete barrel with arbor	022 257	Center wheel bridge screw
213 612	Barrel arbor	022 257	Setting lever spring screw
221 611	Center wheel & pinion	022 458	Screw for oscillating weight
225 611	Cannon pinion	022 467	Ratchet wheel screw
231 602	Third wheel & pinion	022 468	Pallet cock screw
241 611	Fourth wheel & pinion	022 468	Framework screw for automatic device with ball-bearing
251 602	Escape wheel & pinion	022 468	Date driving wheel screw
261 611	Minute wheel	022 491	Minute wheel bridge screw
271 611	Hour wheel	022 493	Barrel & train wheel bridge screw
282 601	Clutch wheel	022 493	Balance cock screw
285 611	Ratchet wheel	022 760	Date dial guard screw
301 611	Jewelled pallet fork & staff	022 760	Day jumper screw
311 601	Balance complete	022 761	Dial screw
341 601	Regulator	022 160	Stud screw
345 601	Stud holder	023 039	Tube for framework screw of automatic device
354 601	Winding stem	023 040	Tube for pallet cock screw (recessed type)
381 601	Click	023 150	Tube for pallet cock screw (cylinder type)
383 601	Setting lever	023 151	Tube for barrel & train wheel bridge screw
384 601	Yoke (Clutch lever)		
387 601	Minute wheel bridge		
388 601	Setting lever spring		
390 601	Setting lever axle		
☆397 601	Lever for unlocking stem A		
☆397 602	Lever for unlocking stem B		
401 615	Mainspring with slipping attachment		
☆500 601	Oscillating weight		
505 601	Transmission wheel		
☆801 601	Date dial		
802 601	Date driving wheel		
803 601	Setting wheel lever complete		
808 601	Date dial guard A		
810 601	Date jumper		
817 611	Intermediate date wheel		
831 611	Pawl lever with jewel		
839 601	Holder for transmission wheel & pawl lever		
868 601	Day finger		
☆870 510	Day star with dial disk		
873 601	Day jumper		
☆884 931	Holding ring for dial		
963 610	Snap for day star with dial disk		
011 145	Upper hole jewel for center wheel		
011 146	Lower hole jewel for center wheel		
011 147	Upper hole jewel for transmission wheel		
011 206	Diafix cap jewel		
011 210	Diashock cap jewel		
011 306	Upper hole jewel for fourth wheel		
011 406	Lower hole jewel for escape wheel		
011 503	Upper hole jewel for pallet		
011 532	Lower hole jewel for third wheel		
011 723	Lower hole jewel for pallet		
011 724	Lower hole jewel for transmission wheel		
014 317	Diashock spring		
014 363	Diashock upper frame		

☆⇒ Please see remarks.

☆⇒ Please see remarks on the next page.

Calibre No. 6319A	Jewels 21j	Style Name
⇨ Basic Calibre 6309A 17j Catalog No. 63-09-1		

Remarks :

Lever for unlocking stem

- ☆397 601.....Used for the one-piece water-resistant case with the dial whose external diameter is **27mm** or longer.
(When the dial is shaped other than round, the radius is to be measured in the direction of the lever for unlocking stem.)
- ☆397 602.....Used for the one-piece water-resistant case with the dial whose external diameter is less than **27mm**.
(When the dial is shaped other than round, the radius is to be measured in the direction of the lever for unlocking stem.)

Date dial

- ☆801 601.....Used when both the crown and the calendar frame are located at **3** o'clock position.
If any other type of date dial is required, specify ① Cal. No. ② the crown position ③ the calendar frame position and ④ the dial No.

Day star with dial disk

- ☆870 510(English ↔ Spanish).....Used when both the crown and the calendar frame are located at **3** o'clock position.
If any other type of day star with dial disk is required, specify the number printed on the disk.

Holding ring for dial

- ☆884 931.....The type of a holding ring for dial is determined based on the design of cases and dials. Check the case number and refer to "**SEIKO Casing Parts List**" to choose a corresponding holding ring for dial.

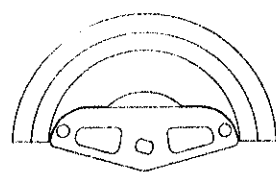
Oscillating weight

- ☆500 601.....This oscillating weight is interchangeable with the one for movements of calibre 61 series listed below, and the interchangeability is limited within the listed calibres.

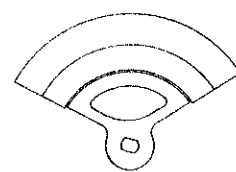
Oscillating weight Cal. No.	500 620	500 622	500 601
6105 A & B			
6106 B & C			
6117 A & B	V	V	V
6118A			
6119 B & C			
6109A	V	V	V
63 Series	—	—	V

V : Interchangeable
— : Not interchangeable

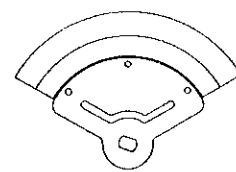
Form of oscillating weight



500 620



500 622



500 601